

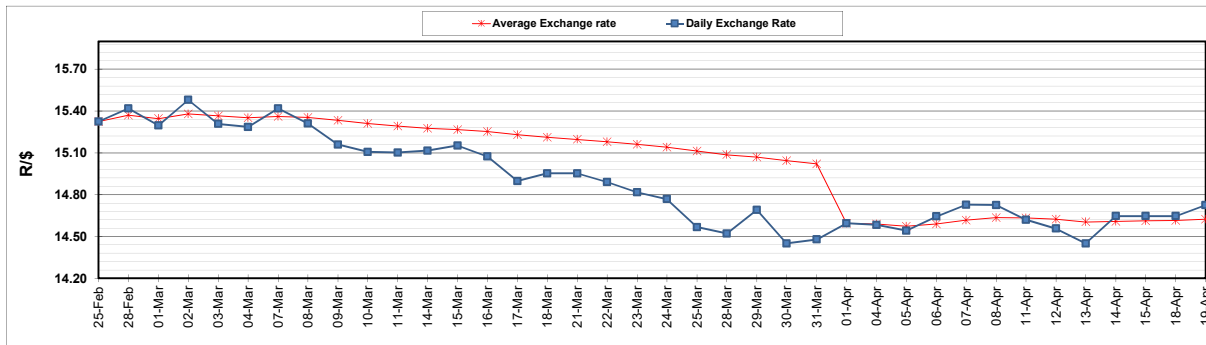
	PETROL 95 ULP	PETROL 93 ULP & LRP	DIESEL 0.05%	DIESEL 0.005%	ILL. PAR.
GAUTENG PUMP PRICE (SA c/l) AS FROM 06/04/2022	2,196.000	2,163.000	-	-	-
WHOLESALE PRICE (SA c/l) AS FROM 06/04/2022	-	-	2,101.440	2,123.840	1,584.688
SINGLE NATIONAL MAXIMUM RETAIL PRICE	-	-	-	-	2,045.000
BASIC FUEL PRICE - 19/04/2022 (SA c/l)	1,248.592	1,227.520	1,491.475	1,502.940	1,429.347
PRESS RELEASE CONTRIBUTION TO BFP 06/04/2022 - 19/04/2022 (SA c/l)	1,278.710	1,255.710	1,402.630	1,425.030	1,363.128
UNIT OVER/(UNDER) RECOVERY - 19/04/2022 (SA c/l)	30.118	28.190	(88.845)	(77.910)	(66.219)
AVERAGE BASIC FUEL PRICE 01/04/2022 - 19/04/2022	1,202.400	1,183.242	1,412.060	1,425.284	1,368.303
AVERAGE UNIT OVER/(UNDER) RECOVERY 01/04/2022 - 19/04/2022	35.131	33.135	(77.507)	(72.023)	(66.560)

ANALYSIS MOVEMENT OF AVERAGE OVER/(UNDER) RECOVERY

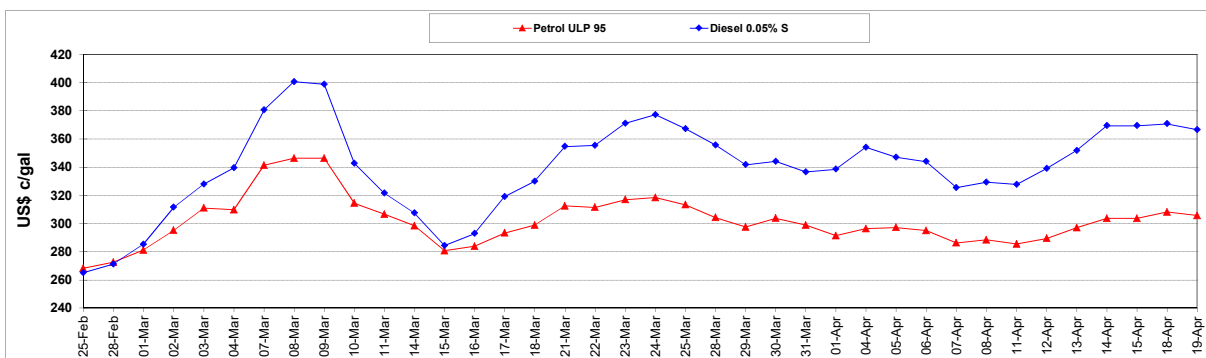
	PETROL 95	PETROL 93	DIESEL 0.05%	DIESEL 0.005%	ILL. PAR.
- MOVEMENT IN INTERNATIONAL PRODUCT PRICES	2.414	0.940	(115.929)	(110.805)	(103.792)
- MOVEMENT IN EXCHANGE RATE	32.718	32.196	38.422	38.782	37.232
AVERAGE UNIT OVER/(UNDER) RECOVERY 01/04/2022 - 19/04/2022	35.131	33.135	(77.507)	(72.023)	(66.560)

R/\$ EXCHANGE RATE - (R/\$14.7250 - 19/04/2022)

EXCHANGE RATE USED IN BASIC FUEL PRICE



INTERNATIONAL PRODUCT PRICES OF BASKET USED IN BASIC FUEL PRICE



BASIC FUEL PRICE IN SA CENTS PER LITRE

